

Netviewer five

What's new in Netviewer one2meet

Virtual conferences and online events are more true-to-life than ever before!

Netviewer five raises the bar for real-time virtual collaboration. With Netviewer's extensive palette of meeting functions, a first-class, fully revised operational concept, and seamless integration into your work environment, you can hold online meetings and events as if you and the participants were in the same room.

Netviewer one2meet gives you the same communication tools that you would use during an on-site meeting. Hold efficient online

meetings to accelerate your company's decision-making and operational processes and gain a valuable edge in the marketplace. Your business partners will be intrigued by this highly effective form of visual communication. Netviewer is even an environmentally-friendly way to do business!

Learn more about the key features of Netviewer five.

Experience Netviewer for yourself.



A multimedia meeting platform for effective communication

Don't just hear the people you are talking to, see them as well with multi-user video

A picture is actually worth more than a thousand words. Gestures and facial expressions are a big part of communication, so Netviewer one2meet transfers live video images of up to six meeting participants simultaneously.



New, high-performance process for transferring audio over the Internet: Voice over IP

Reduce the cost of teleconferences. With Netviewer one2meet you can establish an audio conference with multiple participants in just a few seconds. A new transmission and compression process with full-duplex mode provides outstanding audio quality for up to six participants.

Spontaneously reach agreements and hold multi-level surveys online:

Survey manager

With Netviewer it is easy to discover the participants' opinions, positions, and learning progress during an online event and make this information transparent for everyone. The survey manager makes creating and evaluating ad hoc surveys and extensive questionnaires incredibly simple. Visualizing and saving the survey results is just as easy.

Webcasts with a large number of participants:

Event mode

Make it possible for large numbers of participants, such as groups of buyers, members of the media, or fellow employees, to take part in interesting subjects. With the Event mode, you can reach several hundred participants at the same time.

By customizing the range of functions available to

the participants, moderating and holding such events becomes much easier.

Visualize moods and provide feedback with emoticons

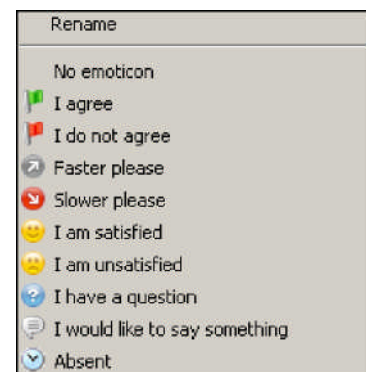
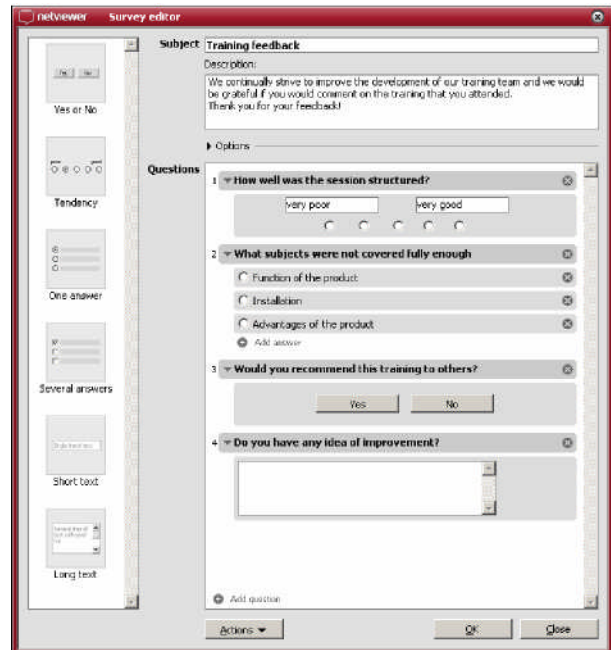
Emoticons are graphical icons that give participants an easy way to express their current mood. You will find this additional method of feedback a useful way to inform the other session participants of your opinion or mood.

Joint viewing of videos

Would you like to view videos together with the other participants? Then simply select the video file you want to view from the *My video* tray and start it. You can resize the video window as desired. Image quality depends on the quality of the video file.

Start conferences faster with seamless integration of applications

Ease of use and high user acceptance are important for establishing Web conferences as a standard tool at your company. Seamless integration into enterprise applications (such as ERP, CRM, help desk, Office applications, user directories, and portals) and communications solutions (such as e-mailing, presence management, instant messengers, and shared workspaces) are critical aspects of making this a reality.



Netviewer five has an open architecture. Thanks to a variety of integration components like Java and COM-based interfaces and standardized plug-ins, it is easy to quickly integrate Netviewer into your internal applications and business processes.

Outlook plug-in lets you plan session appointments directly in Microsoft Outlook calendar

You can mark Outlook appointments as a Netviewer meeting while scheduling the appointment. When the moderator sends the appointment invitation to the participants, it will contain a link to start the Web meeting directly. The appointment will be entered into all participants' Outlook calendars.

Starting Netviewer from another application with just one click: plug-ins for Skype and Lotus Notes

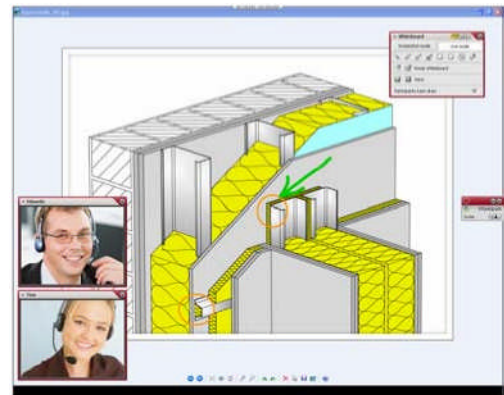
Netviewer plug-ins are useful for users who want a quick and easy way to start Netviewer from other applications. You can start a virtual meeting from the following applications with just one click: Microsoft Office (Microsoft Outlook, Word, Excel, PowerPoint), Microsoft Internet Explorer, Microsoft Windows Explorer, Mozilla Firefox, Mindjet MindManager. The latest plug-ins are for groupware solution Lotus Notes and Internet telephony tool Skype.

First-class usability with minimal need for training

Floating windows let you drag and drop trays wherever you want

Control panel trays can be easily dragged away from the control panel and dropped anywhere on the screen. You can use this feature to organize the Netviewer interface according to your requirements. Once located outside of the control panel, the size of many trays, such as *Video*

and Chat, can be adjusted as desired.

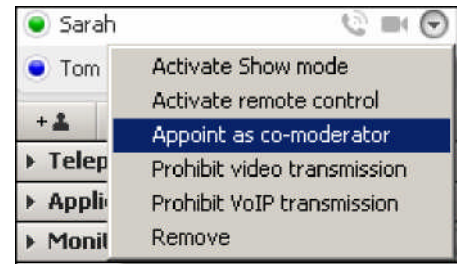


Giving the moderator an easy way to administer rights

The *Session* tray in the control panel is the moderator's control center. Many functions related to the meeting and the participants are controlled here. A new, more ergonomic user interface was developed to simplify operation even as the number of functions increases.

Handing over session leadership to another person: appoint a co-moderator

If there ever comes a time when you need to leave an online meeting temporarily, simply forward leadership and control to a co-moderator. As moderator, you can appoint any participant to be co-moderator. The co-moderator receives all of the rights he or she needs in order to take over moderation of the session.



Like using an overhead projector: Theater mode

In addition to the transferred application, the expanded full-screen mode also shows Chat, the video of the participant who is in show mode (large), and the videos of other session participants (small). The background is black so the participants' full attention is focused on the current item being discussed.



Well-organized application selection with tree structure is easy to use

In the *Application selection* tray you determine which applications and elements of your screen your session partners will see. If one application has several open windows, then these will be shown below the application in a tree-type structure. In addition to individually opened instances of an application, entire application groups can also be released for transfer or hidden. When the user places the mouse over an application in the application selection area, that application will be visually highlighted.

Additional functional and technical characteristics

Increased stability and speed of the transmission connection: Further development of Netviewer's transport layer and support for the SSL protocol as another option for data transmission have once again increased connection stability during network problems, firewall penetration, and transmission speed.

Automatic reconnection after interruptions: If the Internet connection to the Netviewer server is interrupted for a short time, the session will not suddenly end; instead the moderator will be automatically reconnected with the ongoing conference.

Session recording now in .ASF file format: The recording function allows to retrace Web conferences. All session components, including voice (when using VoIP), are kept in the recording. Netviewer now supports session recording in file formats .nvl and .asf.

Activate Whiteboard, Live, or Screenshot mode with a single mouse click: Now you can activate and deactivate screenshot mode (freezes screen) and live mode (continues to transfer screen) with a

single mouse click.



Drag & drop from Favorites into File-transfer or Video tray: If you have placed a file in the Favorites tray in the form of a link, you can drag it into the File transfer (all file formats) and *My video* (file formats .avi and .mpeg) trays.

Avoid conference room bottlenecks with the Netviewer User Infobox: Had you ever wanted to start a Netviewer conference but found that all licensed rooms were already taken by your coworkers? When this happens, the User Infobox lets you see who is currently occupying the licensed rooms. This gives you the opportunity to reach an agreement with your co-workers. We are happy to provide this free option upon request. Please ensure in advance that usage of this function conforms with your company's data-protection regulations.



Footnotes

The range of available functions in the Netviewer programs depends on which product variation is licensed. Not all functions described in this document are included in the Netviewer one2meet basis version, but are available at additional cost. Please contact your Netviewer sales partner or send an e-mail directly to info@zelena.com if you are interested in an optional function.

Date: November 22, 2007